

E-Werk Kulturzentrum GmbH, Fuchsenwiese 1, 91054 Erlangen
Technische Informationen / Venue Information
Clubbühne (medium Venue)

Kapazität / Capacity: **450** Stehplätze / standing **180** Sitzend / seated

Bühne / Stage: **7m** Breite / width **4,20m** Tiefe / depth **0,60m** Höhe / height
2,86m lichte Höhe (Decke) / clearance (ceiling)
2,30m lichte Höhe (Scheinwerfer) / clearance (light-equipment)

feste Bühne / fixed stage

Raum / Venue: **12,5m** Breite / width **19m** Tiefe / depth **3 - 4m** Höhe / height

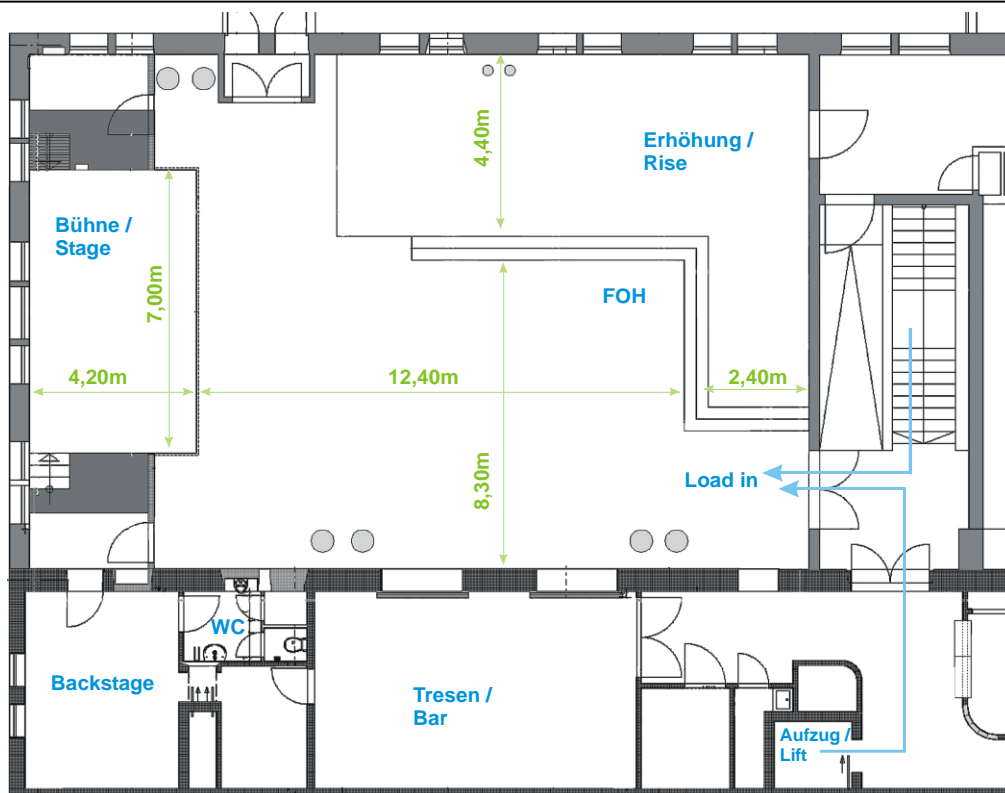
Garderoben / Backstage: **1** Raum (19qm) mit WC, Dusche / Room with Toilet, Shower

Produktionsbüro / Production-Office: **1** mit DSL W-LAN, Telefon und PC (8qm) / with DSL W-LAN, Telephone and Computer

Ladeweg / Load in: ca. / about **50m** durch / through "Eingang Fuchsenwiese" über Aufzug oder Treppen / Lift or Stairs (2.Stock / 2nd floor)

Parkplatz / Parking: möglich, inkl. Strom für Bus / possible incl. Power for Bus

Strom / Power: **1x CEE 32A**



Lautstärke-Hinweis: Um unserem Publikum ein optimales Konzerterlebnis bieten zu können, wünschen wir uns während der Show einen durchschnittlichen Lautstärkepegel von max. 99db(A) am FOH (gemäß DIN 15 905 Teil 5). Auf diesem Weg möchten wir das Publikum vor zu hohen Schalldruckpegeln schützen.

Volume-Notice: To provide the best possible concert-experience for our audience we would like to request that the average sound-pressure level during the show is (maximum) 99db(A) at the FOH (in accordance with DIN 15 905 Part 5). This is to avoid impairing the audience's hearing by high sound-pressure levels.

Ton / Sound: d&b Audio System,
2x 24S
4x VGSUB
1x D20 Amp
1x D80 Amp
2x E8 Downfill

Multicore: Analog 32/8+4 or 2pcs. CAT5

FOH / Monitor Digital 1x Allen & Heath SQ7
FOH / Monitor digital

Monitor / 6x d&b MAX (15" / 2") (opt. 8 w. LAB ip2100 Rack)
Monitoring: 3x Yamaha P7000S
4x d&b MAX 12 (12" / 2") (opt.)
4x Lab Gruppen iP 2100 (opt.)

Monitor über FOH / no separate Monitor Desk

Achtung: rechts und links neben der Bühne sind gemauerte Wände – also ist kein Platz für einen aktiven Monitor!

Attention: there are solid walls on the right and on the left next to the stage – so there is no space for a separate monitor desk!

Mikrofone /
Microphones: 2x Shure SLX SM58 / beta58 / DPA 4088,
UHF Funkmikrofone / wireless

5x Shure SM 58
5x Shure SM 57
1x Shure Beta 52°
4x Sennheiser e 604 Clip

1x AKG C 1000 (Condenser)
3x Oktava MK 012 (Condenser)
2x Shure SM 81 (Condenser)
6x BSS AR 133 DI-Box
1x sennheiser md 421
1x sennheiser md 441

**AV-Technik /
Video Equipment**

1x Panasonic MZ-680, 6000 ANSI, 1920x1200
1x DVD-Player, opt. Blu-Ray Player

Licht / Lighting:

Backtruss:

- 10x ClayPaky Mini-B
- 2x Generic 2-Lite Blinder
- 2x Martin Atomic 3000 DMX Strobe

Midtruss

- 2x 2-Lite Blinder

Fronttruss:

- 4x ARRI ST1 1000W Fresnel p.o. (pole operated)
- 2x 2-Lite Blinder
- 2x Profiler
- 1x JEM Magnum 2000 DMX Fog

Dancefloor:

- 4x Expolite TourWash Mini RGBW/12x10W Quad LED/20°
- 20x Ayrton MagicDot-SX
- 4x Stairville CB-100 LED Color Beam
- 1x Martin Atomic 3000 DMX Strobe
- 2x Mirrorball 30cm with Motor

Stage:

- 1x Smoke Factory Tour Hazer II
- 6x Expolite TourLED 42 CM MKII

**Lichtpult /
Lighting Desk:**

1x MA Lighting grandMA2 onPC command wing Tourpack v2

DMX Patch

Venue:	E-Werk Erlangen Clubbühne	Date:	14.01.2022
---------------	---------------------------	--------------	------------

Fix-ID	Position	Manufacturer	Model	Patch	Mode	Notes
1	Fronttruss	ARRI St1 <<	Dimmer Ch.	1.001	Dimmer	
2	Fronttruss	ARRI St1 <	Dimmer Ch.	1.002	Dimmer	
3	Fronttruss	ARRI St1 >	Dimmer Ch.	1.003	Dimmer	
4	Fronttruss	ARRI St1 >>	Dimmer Ch.	1.004	Dimmer	
5	Fronttruss	Profiler L	Dimmer Ch.	1.005	Dimmer	
6	Fronttruss	Profiler R	Dimmer Ch.	1.006	Dimmer	
7	Backtruss	2-Lite Blinder	Dimmer Ch.	1.007	Dimmer	
8	Backtruss	2-Lite Blinder	Dimmer Ch.	1.008	Dimmer	
9	Midtruss	2-Lite Blinder	Dimmer Ch.	1.009	Dimmer	
10	Midtruss	2-Lite Blinder	Dimmer Ch.	1.010	Dimmer	
11	Fronttruss	2-Lite Blinder	Dimmer Ch.	1.011	Dimmer	2x
12	Fronttruss	2-Lite Blinder	Dimmer Ch.	1.012	Dimmer	2x

101						
102						
103						
104						
105						
106						

201	Backtruss	ClayPaky	Mini-B	1.013	21 Ch. Ext.	
202	Backtruss	ClayPaky	Mini-B	1.034	21 Ch. Ext.	
203	Backtruss	ClayPaky	Mini-B	1.055	21 Ch. Ext.	
204	Backtruss	ClayPaky	Mini-B	1.076	21 Ch. Ext.	
205	Backtruss	ClayPaky	Mini-B	1.097	21 Ch. Ext.	
206	Backtruss	ClayPaky	Mini-B	1.118	21 Ch. Ext.	
207	Backtruss	ClayPaky	Mini-B	1.139	21 Ch. Ext.	
208	Backtruss	ClayPaky	Mini-B	1.160	21 Ch. Ext.	
209	Backtruss	ClayPaky	Mini-B	1.181	21 Ch. Ext.	
210	Backtruss	ClayPaky	Mini-B	1.202	21 Ch. Ext.	

301	Pipe SR	Expolite	TourLED 42 CM MKII	1.361	TR16 (13Ch.)	
302	Pipe SR	Expolite	TourLED 42 CM MKII	1.374	TR16 (13Ch.)	
303	Pipe SR	Expolite	TourLED 42 CM MKII	1.387	TR16 (13Ch.)	
304	Pipe SL	Expolite	TourLED 42 CM MKII	1.400	TR16 (13Ch.)	
305	Pipe SL	Expolite	TourLED 42 CM MKII	1.413	TR16 (13Ch.)	
306	Pipe SL	Expolite	TourLED 42 CM MKII	1.426	TR16 (13Ch.)	

401	Audience	Ayrton	MagicDot-SX	2.001	16 Ch. Basic	
402	Audience	Ayrton	MagicDot-SX	2.017	16 Ch. Basic	
403	Audience	Ayrton	MagicDot-SX	2.033	16 Ch. Basic	
404	Audience	Ayrton	MagicDot-SX	2.049	16 Ch. Basic	
405	Audience	Ayrton	MagicDot-SX	2.065	16 Ch. Basic	
406	Audience	Ayrton	MagicDot-SX	2.081	16 Ch. Basic	
407	Audience	Ayrton	MagicDot-SX	2.097	16 Ch. Basic	
408	Audience	Ayrton	MagicDot-SX	2.113	16 Ch. Basic	
409	Audience	Ayrton	MagicDot-SX	2.129	16 Ch. Basic	
410	Audience	Ayrton	MagicDot-SX	2.145	16 Ch. Basic	
411	Audience	Ayrton	MagicDot-SX	2.161	16 Ch. Basic	
412	Audience	Ayrton	MagicDot-SX	2.177	16 Ch. Basic	
413	Audience	Ayrton	MagicDot-SX	2.193	16 Ch. Basic	
414	Audience	Ayrton	MagicDot-SX	2.209	16 Ch. Basic	
415	Audience	Ayrton	MagicDot-SX	2.225	16 Ch. Basic	
416	Audience	Ayrton	MagicDot-SX	2.241	16 Ch. Basic	
417	Audience	Ayrton	MagicDot-SX	2.257	16 Ch. Basic	
418	Audience	Ayrton	MagicDot-SX	2.273	16 Ch. Basic	
419	Audience	Ayrton	MagicDot-SX	2.289	16 Ch. Basic	
420	Audience	Ayrton	MagicDot-SX	2.305	16 Ch. Basic	

501	Audience	Expolite	Tourwash Mini 48CM+W	2.341	12 Ch.	
502	Audience	Expolite	Tourwash Mini 48CM+W	2.353	12 Ch.	
503	Audience	Expolite	Tourwash Mini 48CM+W	2.365	12 Ch.	
504	Audience	Expolite	Tourwash Mini 48CM+W	2.377	12 Ch.	
505	Audience	Expolite	Tourwash Mini 48CM+W	2.389	12 Ch.	
506	Audience	Expolite	Tourwash Mini 48CM+W	2.401	12 Ch.	
507	Audience	Expolite	Tourwash Mini 48CM+W	2.413	12 Ch.	
508	Audience	Expolite	Tourwash Mini 48CM+W	2.425	12 Ch.	

601	Audience	Stairville	CB-100 LED-Color Beam	2.321	4 Ch.	Spiegelkugel
602	Audience	Stairville	CB-100 LED-Color Beam	2.325	4 Ch.	Spiegelkugel
603	Audience	Stairville	CB-100 LED-Color Beam	2.329	4 Ch.	Spiegelkugel
604	Audience	Stairville	CB-100 LED-Color Beam	2.333	4 Ch.	Spiegelkugel

901	Backtruss	Martin	Atomic 3000 DMX	1.496	Effect (4Ch.)	
902	Backtruss	Martin	Atomic 3000 DMX	1.492	Effect (4Ch.)	
903	Audience	Martin	Atomic 3000 DMX	2.496	Effect (4Ch.)	

1001	Fronttruss	JEM	Magnum 2000 DMX	1.502	1Ch.	
------	------------	-----	-----------------	-------	------	--

1010	Floor	Smoke Factory	Tour Hazer II	1.500	2Ch.	
------	-------	---------------	---------------	-------	------	--

DMX Chart: Clay Paky Mini-B (Extended RGBW)

- 1 Red Circle
- 2 Green Circle
- 3 Blue Circle
- 4 White Circle
- 5 Red Centre
- 6 Green Centre
- 7 Blue Centre
- 8 White Centre
- 9 CTO
- 10 Macro Color
- 11 Strobe
- 12 Dim
- 13 Dim (fine)
- 14 Pan
- 15 Pan (fine)
- 16 Tilt
- 17 Tilt (fine)
- 18 Zoom
- 19 Color Crossfade
- 20 Funktion

21 Reset

DMX Chart: CB-100 LED Beam

- 1 Dimmer
- 2 Color Wheel
- 3 Shutter
- 4 Function (11-60 MIB Colorwheel, 161-210 Reset Color, 211-255 Reset All)

DMX Chart: TourLED 42 CM MKII

- 1 Dimmer
- 2 Dimmer Fine
- 3 Red
- 4 Red Fine
- 5 Green
- 6 Green Fine
- 7 Blue
- 8 Blue Fine
- 9 Color Macro & White (11-200 Colors, 201-255 White 3200K to 10000K)
- 10 Strobe
- 11 Auto Function
- 12 Auto Function Speed
- 13 Dimmer Speed Curve

DMX Chart: Ayerton MagicDot-SX (Basic)

- 1 Pan
- 2 Tilt
- 3 Speed Pan/Tilt
- 4 Pan Mode
- 5 Tilt Mode
- 6 Red
- 7 Green
- 8 Blue
- 9 White
- 10 Shutter
- 11 Dimmer
- 12 Color Macro
- 13 Color Presets
- 14 Color Presets Dimmer
- 15 Zoom
- 16 Reset

DMX Chart: Tourwash Mini 48CM+W

Stand 01/22

- 1 Shutter Effects
- 2 Dimmer
- 3 Pan
- 4 Pan fine
- 5 Tilt
- 6 Tilt fine
- 7 Fixture Control Setting
- 8 Color Wheel Effect
- 9 Red
- 10 Green
- 11 Blue
- 12 White