

Technische Informationen / Venue Information

Saal (big Venue)

Kapazität / Capacity: 1000 Stehplätze / standing 370 Sitzend / seats
(abhängig von der Bühnengröße / depends on the size of the Stage)

Bühne / Stage: 8m Breite / width 6m Tiefe / depth 0,80m Höhe / height
ca. 3,85m lichte Höhe (Decke) / clearance (ceiling)
3,20m lichte Höhe (Scheinwerfer) / clearance (light-equipment)

Raum / Venue: 12m Breite / width 20m Tiefe / depth ca. 5m Höhe / height

Garderoben / Backstage: 1 Raum (11qm) mit Waschbecken / Room with cold / warm water

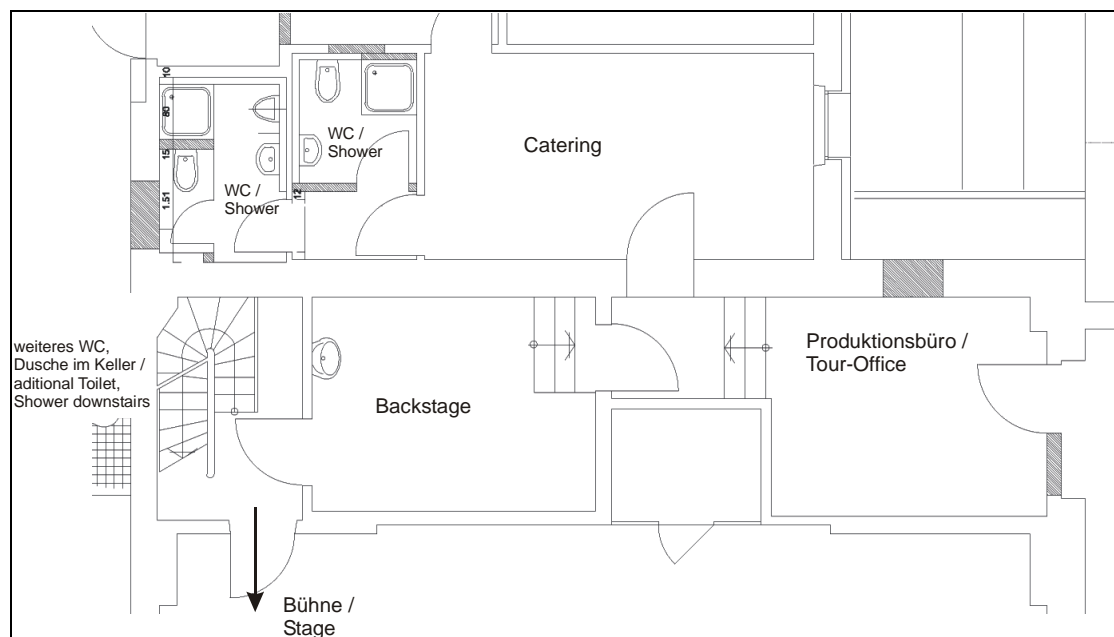
Toiletten / Toilets: 2 im Backstage (männl. / weibl. getrennt) / within Backstage (separate for men / woman)

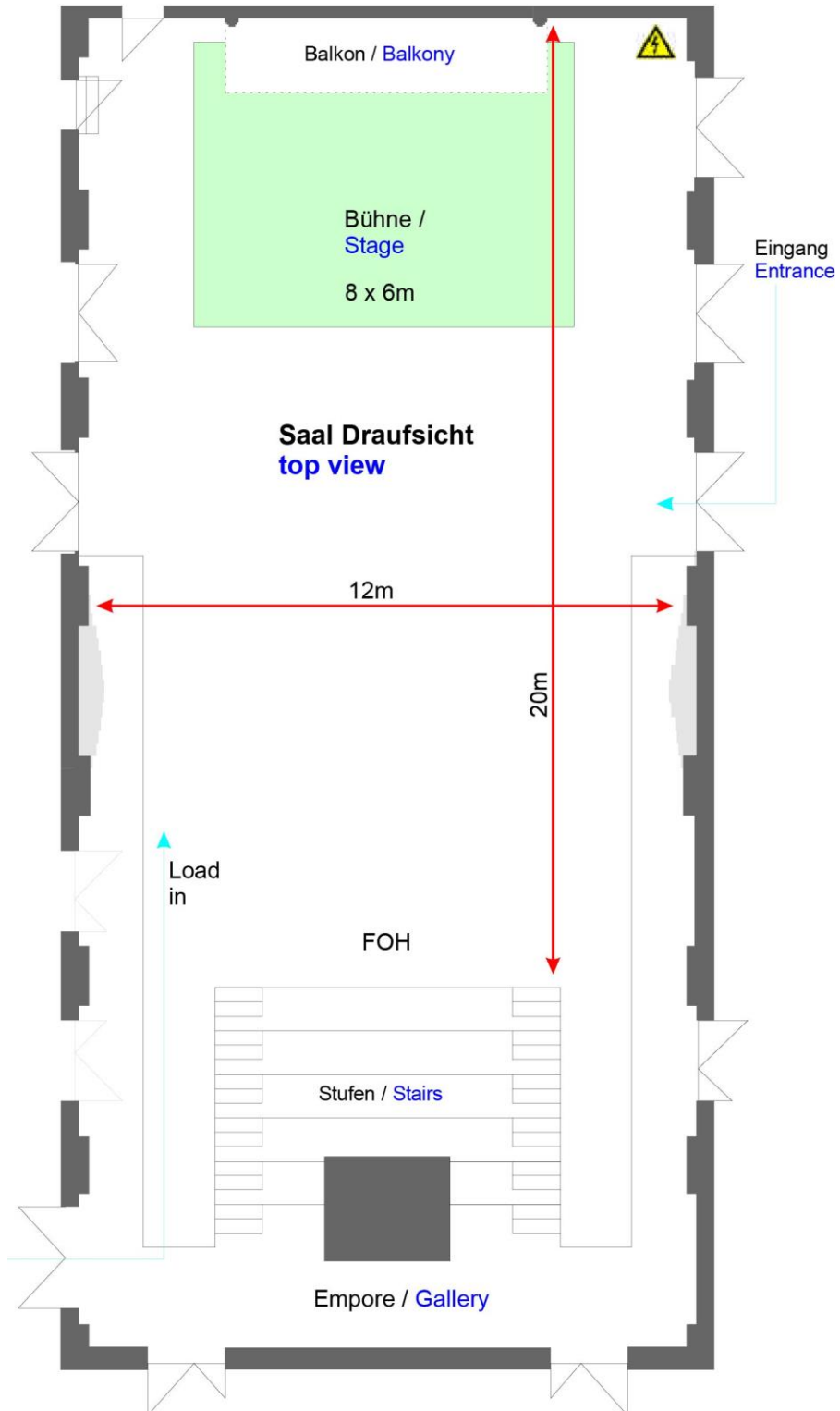
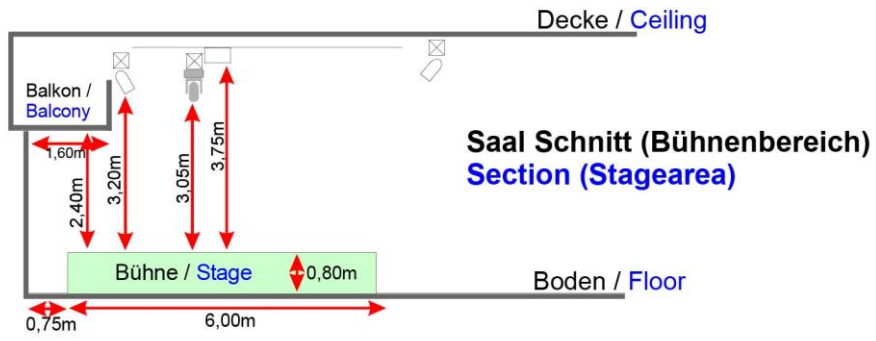
Duschen / Showers: 2 im Backstage (männl. / weibl. getrennt) within Backstage (separate for men / woman)

Catering: 1 Küche (16qm) mit Kühlschrank, Herd, Spülmaschine / Room with fridge, stove and dishwasher

Produktionsbüro / Tour-Office: 1 mit DSL W-LAN, Telefon und PC (11qm) / with DSL W-LAN, Telephone and Computer

Merchandise-Fee bei unbestuhlten Konzerten: 80€ zzgl. Mwst
unseated concerts: 80€ + tax





Ladeweg / Load in:	ca. / about 25m durch / through "Eingang Fuchsenwiese"
Parkplatz / Parking:	möglich, inkl. Strom für Bus / possible, incl. Power for Bus
Strom / Power: Licht / Lighting	2x CEE 63A rot, 2x CEE 32A rot, 2x CEE 16A rot 6x Schuko
Strom / Power: Ton / Sound	1x CEE 32A rot, 2x CEE 16A rot 2x CEE 16A blau, 2x Schuko
Lautstärke-Hinweis:	Um unserem Publikum ein optimales Konzerterlebnis bieten zu können, wünschen wir uns während der Show einen durchschnittlichen Lautstärkepegel von max. 99db(A) am FOH (gemäß DIN 15 905 Teil 5). Auf diesem Weg möchten wir das Publikum vor zu hohen Schalldruckpegeln schützen.
Volume-Notice:	To provide the best possible concert-experience for our audience we would like to request that the average sound-pressure level during the show is (maximum) 99db(A) at the FOH (in accordance with DIN 15 905 Part 5). This is to avoid impairing the audience's hearing by high sound-pressure levels.
Ton / Sound:	Seeburg acoustic line touring system, 4x Top TSE 4030 8x Bass TSE Sub 2x A4 Downfill Systemcontroller BSS-336T Minidrive 1x Lab Gruppen fP 3400 (Top) 2x Lab Gruppen fP 6400 (Sub) 1x Crown xti 2002 (Downfill)
Multicore	32 Input-Kanäle; 8 Return-Kanäle; Summe R+L 32 Channels Input; 8 Lines Return; 2 Lines Master
FOH / Monitor Digital FOH / Monitor digital	1x Digidesign Venue SC 48, incl waves bundle, local I/O (keine 48 Kanäle nutzbar – siehe Multicore) (not all 48 Ch. can be used - due to Multicore) Denon CD Player 1x Digidesign Venue SC48, incl. waves bundle, I/O Venue stage48 1x Behringer X32
FOH Pult klein / small FOH Desk:	Allen & Heath WZ 16:2 DX (6 Aux) 1x t.c. electronic M2000 1x BSS FCS 960 EQ 2x Yamaha 2031 EQ 1x BSS DPR 404 (4x Compressor) 2x dbx 160 XT
Monitor / Monitoring:	8x d&b MAX (15" / 2") 4x d&b MAX 12 (12" / 2") 4x Lab Gruppen iP 2100

Drumsub	PSE B218 Sub (plus wedge as Top) 1x Kind XT 2000 (Top) 1x Kind XT 4000 (Sub) 1x dbx "Drive Rack PA" Loudspeaker Control System
Sidefill	2 x RCF Art 712-A MK II / active Fullrange-Speaker 2 x RCF Sub 705-AS / active Bandpass-Subwoofer
Split	32 Ch passive Split for Monitors
Mikrofone /	2x Shure SLX SM58 / beta58 / DPA 4088, UHF Funkmikrofone / wireless
Microphones:	12x Shure SM 58 10x Shure SM 57 2x Shure Beta 52 2x Shure Beta 91 8x Sennheiser e 604 Clip 2x AKG C 1000 (Condenser) 6x Oktava MK 012 (Condenser) 4x Oktava MK 219 (large Diaphragm Condenser) 2x Shure SM 81 (Condenser) 1x sennheiser md421 1x sennheiser 441 8x BSS AR 133 DI-Box
AV-Technik / Video Equipment	1x Beamer, DLP, XGA, 5500 ANSI-Lumen, 1600:1 1x DVD-Player, Componet-Out 1x Leinwand (motorisch) 6x4m, über Bühne Screen (motor) 6x4m, above Stage

Licht / Lighting:

Lichtpulte / Lighting Desks:	GrandMA II ultra-light inkl. Faderwing MA Lightcommander II 24 / 6
Backtruss / Midtruss:	2x PAR 64 6er Bar CP60 (Single Patch) 6x 2-Lite Blinder 2x ACL PAR 36 4x Elation Platinum Spot LED MKII 6x JB-LED A4 1x Martin Atomic Strobe
Fronttruss:	4x 1000W PC-Linsenscheinwerfer / PC 6x 1000W Profilscheinwerfer / profile spotlights 2x PAR 64 6er Bar CP62 (Single Patch) 4x 4-Lite Blinder
Floor:	6x PAR 64 short nose, 500W 4x ExpoLite TourLED 21 RGB
Party:	4x Elation Platinum Spot LED MKII fest an der Decke installiert / situated above Stage 2x Elation Platinum Beam 5R 6x JB-LED A4 2x Martin Atomic Strobe
Nebel / Hazer:	1x Nebelmaschine / Smoke machine: Look Viper 2.6 fest an der Decke installiert / situated above Stage
Fog / Haze:	2x Hazer / Haze machine: Smoke Factory - Tour Hazer MKII
Dimmer:	132 Ch. DimMA Compact – MA Lighting
DMX:	Es werden zwei (2) DMX-Universen benötigt, um das komplette Licht zu steuern! To control the complete Lighting, your desk needs two (2) DMX-Universes!
Universe A:	Konventionelles Licht + Saallicht / Conventional Lighting + Venue Lighting
Universe B:	Movinglights, LEDs, Strobes, Fog, Hazer

DMX Patch

Univers A						
Fixture	Fix-Nr.	Mode	Startadr.	Channels	last Adr.	Location
Dimmer Saal (MA)		x	1	132	132	x
Houselight		x	133	3	135	x

Univers B						
Fixture	Fix-Nr.	Mode	Startadr.	Channels	last Adr.	Location
JBLED A4 - 1	1	S16	1	19	19	Backtruss
JBLED A4 - 2	2	S16	20	19	38	Backtruss
JBLED A4 - 3	3	S16	39	19	57	Backtruss
JBLED A4 - 4	4	S16	58	19	76	Backtruss
JBLED A4 - 5	5	S16	77	19	95	Backtruss
JBLED A4 - 6	6	S16	96	19	114	Backtruss
JBLED A4 - 7	7	S16	115	19	133	Backtruss
JBLED A4 - 8	8	S16	134	19	152	Backtruss
JBLED A4 - 9	9	S16	153	19	171	Midtruss
JBLED A4 - 10	10	S16	172	19	190	Midtruss
JBLED A4 - 11	11	S16	191	19	209	Midtruss
JBLED A4 - 12	12	S16	210	19	228	Midtruss
Elation Platinum Spot LED - 1	21	Std	229	16	244	Backtruss
Elation Platinum Spot LED - 2	22	Std	245	16	336	Backtruss
Elation Platinum Spot LED - 3	23	Std	261	16	352	Backtruss
Elation Platinum Spot LED - 4	24	Std	277	16	368	Backtruss
Elation Platinum Spot LED - 1	31	Std	293	16	320	Dancefloor
Elation Platinum Spot LED - 2	32	Std	309	16	336	Dancefloor
Elation Platinum Spot LED - 3	33	Std	325	16	352	Dancefloor
Elation Platinum Spot LED - 4	34	Std	341	16	368	Dancefloor
Elation Platinum Beam 5R - 1	41	Std	357	13	416	Dancefloor
Elation Platinum Beam 5R - 2	42	Std	370	13	429	Dancefloor
TourLED Floor – 1	51	AR1.S/IRGBS	383	5	375	Stage
TourLED Floor – 2	52	AR1.S/IRGBS	388	5	382	Stage
TourLED Floor – 3	53	AR1.S/IRGBS	393	5	389	Stage
TourLED Floor – 4	54	AR1.S/IRGBS	398	5	396	Stage
Free DMX Channels	x	x	403	29	487	x
Atomic - 1	91	4	484	4	491	x
Atomic - 2	92	4	488	4	495	x
Atomic - 3	93	4	492	4	499	x
Atomic - 4	93	4	496	4	499	x
Tourhazer (SF)	101	x	500	2	501	Stage
Look Viper 2.6 – 1	102	x	502	1	502	Dancefloor
Look Viper 2.6 - 2	103	x	503	1	504	Dancefloor