

E-Werk Kulturzentrum GmbH, Fuchsenwiese 1, 91054 Erlangen

Technische Informationen / Venue Information

Clubbühne (medium Venue)

Kapazität / Capacity: **440** Stehplätze / standing **150** Sitzend / seats

Bühne / Stage: **7m** Breite / width **4,20m** Tiefe / depth **0,60m** Höhe / height
2,86m lichte Höhe (Decke) / clearance (ceiling)
2,30m lichte Höhe (Scheinwerfer) / clearance (light-equipment)

feste Bühne / solid stage

Raum / Venue: **12,5m** Breite / width **19m** Tiefe / depth **3 - 4m** Höhe / height

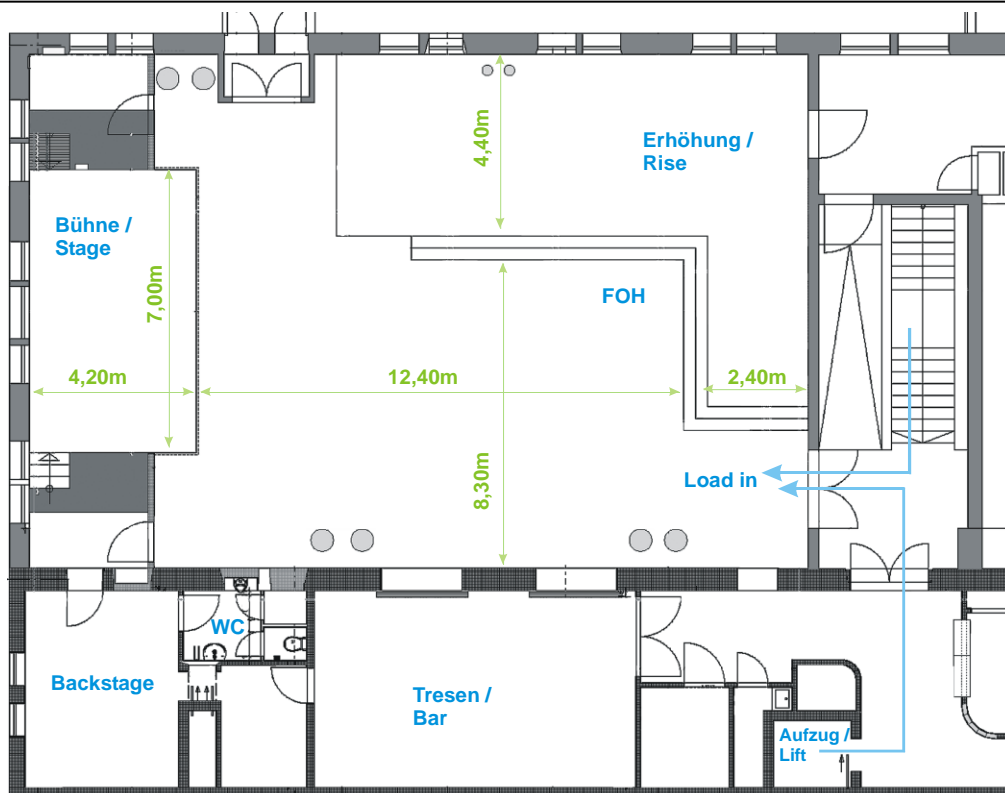
Garderoben /
Backstage: **1** Raum (19qm) mit WC, Dusche /
Room with Toilet, Shower

Produktionsbüro /
Tour-Office **1** mit DSL W-LAN, Telefon und PC (8qm) /
with DSL W-LAN, Telephone and Computer

Ladeweg / Load in: ca. / about **50m** durch / through "Eingang Fuchsenwiese"
über Aufzug oder Treppen / Lift or Stairs
(2.Stock / 2nd floor)

Parkplatz / Parking: möglich, inkl. Strom für Bus / possible incl. Power for Bus

Strom / Power: **2x CEE 63A, 2x CEE 32A**



Lautstärke-Hinweis: Um unserem Publikum ein optimales Konzerterlebnis bieten zu können, wünschen wir uns während der Show einen durchschnittlichen Lautstärkepegel von max. 99db(A) am FOH (gemäß DIN 15 905 Teil 5). Auf diesem Weg möchten wir das Publikum vor zu hohen Schalldruckpegeln schützen.

Volume-Notice: To provide the best possible concert-experience for our audience we would like to request that the average sound-pressure level during the show is (maximum) 99db(A) at the FOH (in accordance with DIN 15 905 Part 5). This is to avoid impairing the audience's hearing by high sound-pressure levels.

**AV-Technik /
Video Equipment** 1x Beamer, DLP, XGA,
5000 ANSI-Lumen, 1600:1
1x DVD-Player, Component-Out

Ton / Sound: d&b Audio C7 System,
2x C7 Top
6x C7 Sub
3x P1200 Amp
2x Seeburg TS Mini Centercluster

FOH / Monitor Digital 1x Digidesign Venue SC 48, incl waves bundle, local I/O
FOH / Monitor digital (keine 48 Kanäle nutzbar – siehe Multicore)
 (not all 48 Ch. can be used - due to Multicore)
 Denon CD Player

1x Digidesign Venue SC48, incl. waves bundle,
I/O Venue stage48

1x Behringer X32

Monitor /
Monitoring: 8x d&b MAX (15" / 2")
 4x d&b MAX 12 (12" / 2")
 4x Lab Gruppen iP 2100

Sidefill/ Drumfill 2x d&b MAX 12/15 Top / PSE B218 Sub
 1x Kind XT 2000 (Top)
 1x Kind XT 4000 (Sub)
 1x dbx "Drive Rack PA" Loudspeaker Control System

Monitor Pult / Desk: über FOH Pult / no separate Desk

Achtung: rechts und links neben der Bühne sind gemauerte Wände –
also ist kein Platz für einen aktiven Monitor!

Attention: there are solid walls on the right and on the left next to the stage –
so there is no space for a separate monitor desk!

Mikrofone /
Microphones:

2x Shure SLX SM58 / beta58 / DPA 4088,
UHF Funkmikrofone / [wireless](#)

12x Shure SM 58
10x Shure SM 57
2x Shure Beta 52°
8x Sennheiser e 604 Clip
2x AKG C 1000 (Condenser)
6x Oktava MK 012 (Condenser)
4x Oktava MK 219 (large Diaphragm Condenser)
2x Shure SM 81 (Condenser)
6x BSS AR 133 DI-Box
1x sennheiser md 421
1x sennheiser md 441

Licht / Lighting:

Backtruss:

- 8x Expolite TourLED 42/14x3 in 1W LED/RGB/16°
- 4x Expolite TourSpot 60/60W LED/18°
- 6x Stairville CB-100 LED Color Beam/10W LED/2°
- 1x Stairville 1500W Stroboskop
- 6x Dimmer Channel

Fronttruss:

- 2x Expolite LED Fresnel WW/3100K/13-41°
- 2x 2-Lite Blinder
- 6x Dimmer Channel

Dancefloor:

- 8x Expolite TourWash Mini RGBW/12x10W Quad LED/20°
- 4x Expolite TourSpot 60/60W LED/18°
- 8x Expolite TourLED21/7x3 in 1W LED/RGB/16°
- 4x Expolite TourLED Power/1x 10W/RGBW/10°
- 1x Stairville 1500W Stroboskop
- 2x Mirrorball 30cm with Motor

Stage:

- 1x Smoke Factory Tour Hazer II / [Haze mashine](#)
- 6x Dimmer Channel

Lichtpult /
Lighting Desk:

1x MA Lighting MA on PC command wing

Backline:

- Yamaha U3

DMX Patch

Venue: E-Werk Erlangen Clubbühne

Date: 20.09.2017

Fix-ID	Position	Manufacturer	Model	Patch	Mode	Notes
1	Fronttruss	Generic	2-Lite DWE	1.001	Dimmer	2 pcs.
2	Backtruss	Generic	Dimmer Ch.			Spare PB
3	Backtruss	Generic	Dimmer Ch.			Spare PB
4	Backtruss	Generic	Dimmer Ch.			Spare PB
5	Backtruss	Generic	Dimmer Ch.			Spare PB
6	Backtruss	Generic	Dimmer Ch.			Spare PB
7	Fronttruss	Generic	Dimmer Ch.			Spare PB
8	Fronttruss	Generic	Dimmer Ch.			Spare PB
9	Fronttruss	Generic	Dimmer Ch.			Spare PB
10	Fronttruss	Generic	Dimmer Ch.			Spare PB
11	Fronttruss	Generic	Dimmer Ch.			Spare PB
12	Fronttruss	Generic	Dimmer Ch.			Spare PB
13	Stage	Generic	Dimmer Ch.			Spare PB
14	Stage	Generic	Dimmer Ch.			Spare PB
15	Stage	Generic	Dimmer Ch.			Spare PB
16	Stage	Generic	Dimmer Ch.			Spare PB
17	Stage	Generic	Dimmer Ch.			Spare PB
18	Stage	Generic	Dimmer Ch.			Spare PB
19	Dimmercitiy	Generic	Dimmer Ch.			Spare MP
20	Dimmercitiy	Generic	Dimmer Ch.			Spare MP
21	Dimmercitiy	Generic	Dimmer Ch.			Spare MP
22	Dimmercitiy	Generic	Dimmer Ch.			Spare MP
23	Dimmercitiy	Generic	Dimmer Ch.			Spare MP
24	Dimmercitiy	Generic	Dimmer Ch.			Spare MP

91	Fronttruss	Expolite	FresnelLED 160 WW	1.025	STD.P (5Ch.)	
92	Fronttruss	Expolite	FresnelLED 160 WW	1.030	STD.P (5Ch.)	
93	Fronttruss	Expolite	FresnelLED 160 WW	1.035	STD.P (5Ch.)	

101	Backtruss	Expolite	Tourspot 60	1.040	STD (12Ch.)	
102	Backtruss	Expolite	Tourspot 61	1.052	STD (12Ch.)	
103	Backtruss	Expolite	Tourspot 62	1.064	STD (12Ch.)	
104	Backtruss	Expolite	Tourspot 63	1.076	STD (12Ch.)	

301	Backtruss	Stairville	CB-100 LEDColor Beam	1.244	4Ch.	
302	Backtruss	Stairville	CB-100 LEDColor Beam	1.248	4Ch.	

303	Backtruss	Stairville	CB-100 LEDColor Beam	1.252	4Ch.	
304	Backtruss	Stairville	CB-100 LEDColor Beam	1.256	4Ch.	
305	Backtruss	Stairville	CB-100 LEDColor Beam	1.260	4Ch.	
306	Backtruss	Stairville	CB-100 LEDColor Beam	1.264	4Ch.	

901	Backtruss	Martin	Atomic 3000 DMX	1.268	Effect (4Ch.)	
902		Martin	Atomic 3000 DMX	2.257	Effect (4Ch.)	

201	Truss SR	Expolite	TourLED 42 CM MKII	1.088	TR16 (13Ch.)	
202	Truss SR	Expolite	TourLED 42 CM MKII	1.101	TR16 (13Ch.)	
203	Backtruss	Expolite	TourLED 42 CM MKII	1.114	TR16 (13Ch.)	
204	Backtruss	Expolite	TourLED 42 CM MKII	1.127	TR16 (13Ch.)	
205	Backtruss	Expolite	TourLED 42 CM MKII	1.140	TR16 (13Ch.)	
206	Backtruss	Expolite	TourLED 42 CM MKII	1.153	TR16 (13Ch.)	
207	Backtruss	Expolite	TourLED 42 CM MKII	1.166	TR16 (13Ch.)	
208	Backtruss	Expolite	TourLED 42 CM MKII	1.179	TR16 (13Ch.)	
209	Backtruss	Expolite	TourLED 42 CM MKII	1.192	TR16 (13Ch.)	
210	Backtruss	Expolite	TourLED 42 CM MKII	1.205	TR16 (13Ch.)	
211	Truss SL	Expolite	TourLED 42 CM MKII	1.218	TR16 (13Ch.)	
212	Truss SL	Expolite	TourLED 42 CM MKII	1.231	TR16 (13Ch.)	

401	Audience 2	Expolite	Tourspot 60	2.209	STD (12Ch.)	
402	Audience 2	Expolite	Tourspot 61	2.221	STD (12Ch.)	
403	Audience 1	Expolite	Tourspot 62	2.233	STD (12Ch.)	
404	Audience 1	Expolite	Tourspot 63	2.245	STD (12Ch.)	

501	Audience 2	Expolite	Tourwash Mini 48CM+W	2.001	26Ch.	
502	Audience 2	Expolite	Tourwash Mini 48CM+W	2.027	26Ch.	
503	Audience 1	Expolite	Tourwash Mini 48CM+W	2.053	26Ch.	
504	Audience 1	Expolite	Tourwash Mini 48CM+W	2.079	26Ch.	
505	Audience 1	Expolite	Tourwash Mini 48CM+W	2.105	26Ch.	

506	Audience 1	Expolite	Tourwash Mini 48CM+W	2.131	26Ch.	
507	Audience 2	Expolite	Tourwash Mini 48CM+W	2.157	26Ch.	
508	Audience 2	Expolite	Tourwash Mini 48CM+W	2.183	26Ch.	

601	Audience 2	Expolite	PowerLED 8 Mini CM+W	2.289	AR2D	
602	Audience 2	Expolite	PowerLED 8 Mini CM+W	2.294	AR2D	
603	Audience 1	Expolite	PowerLED 8 Mini CM+W	2.299	AR2D	
604	Audience 1	Expolite	PowerLED 8 Mini CM+W	2.304	AR2D	

701	Audience 2	Litecraft	Mini AT3	2.261	3Ch.	
702	Audience 2	Litecraft	Mini AT3	2.264	3Ch.	
703	Audience 1	Litecraft	Mini AT3	2.267	3Ch.	
704	Audience 1	Litecraft	Mini AT3	2.270	3Ch.	

1001	Fronttruss	JEM	Magnum 2000 DMX	1.500	1Ch.	
------	------------	-----	-----------------	-------	------	--

1010	Floor	Smoke Factory	Tour Hazer II	1.501	2Ch.	
------	-------	---------------	---------------	-------	------	--

DMX Chart: Tourwash Mini 48CM+W

- 1 Pan
- 2 Pan Fine
- 3 Tilt
- 4 Tilt Fine
- 5 Pan/Tilt Speed
- 6 Function (70-79 MIB Enable, 08-89 MID Disable, 200-209 Reset All)
- 7 Dimmer
- 8 Strobe
- 9 Red 1
- 10 Green 1
- 11 Blue 1
- 12 White 1
- 13 Red 2
- 14 Green 2
- 15 Blue 2
- 16 White 2
- 17 Red 3
- 18 Green 3
- 19 Blue 3
- 20 White 3
- 21 Red 4
- 22 Green 4
- 23 Blue 4
- 24 White 4
- Color Macros (8-127 Color 1-32, 128-191 Color Macro 1-16, 192-255
- 25 Color Fade 1-16)
- 26 Color Macro Fade Speed

DMX Chart: Tourspot 60

- 1 Shutter
- 2 Dimmer
- 3 Color Wheel
- 4 Gobo Wheel
- 5 Gobo rotation
- 6 Focus
- 7 Prism
- 8 Pan
- 9 Pan Fine
- 10 Tilt
- 11 Tilt Fine
- 12 Pan/Tilt Speed & Vector Mode (0-251 Fast to Slow, 252-255 Vector Mode)

DMX Chart: CB-100 LED Beam

- 1 Dimmer
- 2 Color Wheel
- 3 Shutter
Function (11-60 MIB Colorwheel, 161-210 Reset Color, 211-255 Reset All)
- 4

DMX Chart: TourLED 42 CM MKII

- 1 Dimmer
- 2 Dimmer Fine
- 3 Red
- 4 Red Fine
- 5 Green
- 6 Green Fine
- 7 Blue
- 8 Blue Fine
Color Macro & White (11-200 Colors, 201-255 White 3200K to 10000K)
- 9
- 10 Strobe
- 11 Auto Function
- 12 Auto Function Speed
- 13 Dimmer Speed Curve

DMX Chart: FresnelLED 160 WW

- 1 Dimmer
- 2 Dimmer Fine
- 3 Strobe
- 4 Zoom
- 5 Function (201-220 Motor Reset)

DMX Chart: PowerLED 8 Mini CM+W

- 1 Dimmer
- 2 Red
- 3 Green
- 4 Blue
- 5 White